



OFFERS OVER

£199,000

Millar Street
Glassford, ML10 6TD

PROPERTY SUMMARY

Nestled within the picturesque, semi-rural village of Glassford is this charming, traditional, end-terraced, three-bedroom cottage. Dating back to circa 1850 this lovely period home offers deceptively spacious accommodation, substantial gardens and additional woodland area to rear, within close proximity to excellent local schooling.

The stylishly presented layout of accommodation comprises; welcoming reception hallway with storage and office area, three well-proportioned double bedrooms, the peaceful rear facing master bedroom with fitted wardrobes, and modern, en-suite shower room. One of the bedrooms is currently being utilised as a second sitting room.

Located to the rear of the property is the bright and generous, dining size lounge with French doors leading to patio area ideal for outdoor entertaining, modern fitted kitchen with oven, hob, and hood, and modern family bathroom with over-bath shower.

3



2



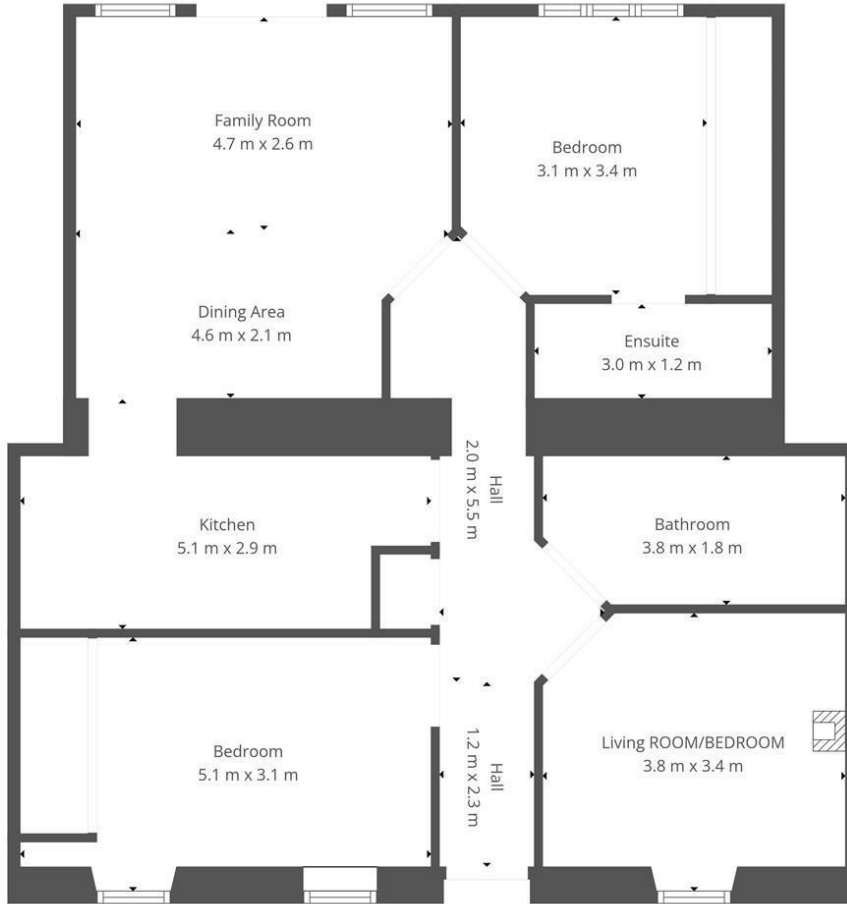
1











This Floorplan Is Intended To Give An Indication Of The Layout Only.

LOCAL AUTHORITY

South Lanarkshire

TENURE

Freehold

COUNCIL TAX BAND

C

VIEWINGS

By prior appointment only

Energy Efficiency Rating		
	Current	Potential
<i>Very energy efficient - lower running costs</i>		
(92 plus) A		
(81-91) B		
(69-80) C		74
(55-68) D	62	
(39-54) E		
(21-38) F		
(1-20) G		
<i>Not energy efficient - higher running costs</i>		
Scotland	EU Directive 2002/91/EC	

Agents Note: Whilst every care has been taken to prepare these particulars, they are for guidance purposes only. All measurements are approximate and are for general guidance purposes only and whilst every care has been taken to ensure their accuracy, they should not be relied upon and potential buyers/tenants are advised to recheck the measurements



OFFICE ADDRESS

9 Townhead Street
Strathaven
ML10 6AB

OFFICE DETAILS

01357 510088
judithmcgill@cruive-estateagents.co.uk